

GRAND BANKS®

Dependable Diesel Cruisers



Make your choice from the popular GB32, the GB36, or the GB42, renowned for its seaworthiness from its heavy displacement, full-length keel, hard chine and deep draft. Powered by either single or twin screws, the entire Grand Banks fleet features a fly bridge with dual helm and complete instrumentation.

American Marine's famous artistry in golden Burmese teak; handcrafted parquet soles, rich-hued ceilings, hand carved rails, fitted cabinetry and trim, are all blended to achieve the traditional yacht look.

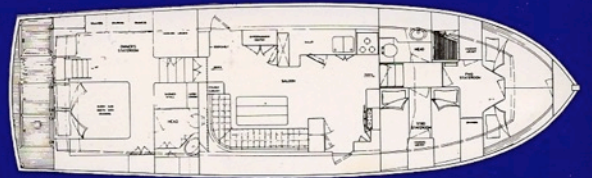
Make it the Grand Banks. Thousands of man-hours dedicated to building the finest ocean-going cruisers. A craft of unrivalled excellence. For the man of distinctive success.

For full information, specifications, and detailed color brochure of individual models, contact:

YACHT HANSE
DAIWAHNSCHIFFTBAUWERKSTÄTTE
Deichstraße 23 • 2000 Wedel/Hamburg
Tel. 04103/88111 Fax: 04103/15057



AMERICAN MARINE (S) PTE LTD 26 Jalan Terusan, Jurong Town, Singapore 2261. Tel: 2650511 Cable: "AMMARSING" Telex: AMSING RS 21294 Fax: 2652537



SPECIFICATIONS

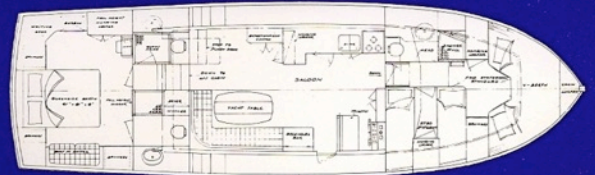
LOA	50'6"	15.39 m
LWL	48'9"	14.86 m
Beam	15'5"	4.70 m
Draft	5'1"	1.55 m
Estimated Displacement	60,000 lbs.	27,216 kg
Water	500 gal.	1,892 litres
Fuel	1,000 gal.	3,785 litres

A larger vessel for the discriminating owner, the Grand Banks 49 combines traditional grace and manoeuvrability with spacious accommodation. The large salon tastefully trimmed with teak is a natural focal point for entertainment or relaxation, while the three private double staterooms provide elegant accommodation for the owner and his party. For extended cruising or living aboard, the uncompromising design and construction of the Grand Banks 49 inspires confidence and satisfaction.



Right: Main Salon
Above: Flying Bridge





SPECIFICATIONS

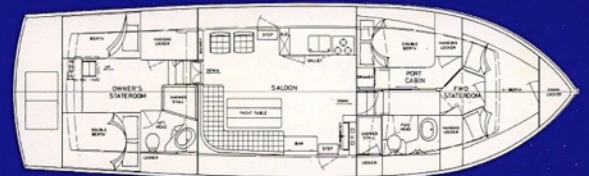
LOA	50'6"	15.39 m
LWL	48'9"	14.86 m
Beam	15'5"	4.70 m
Draft	5'1"	1.55 m
Estimated Displacement	60,000 lbs.	27,216 kg
Water	500 gal.	1,892 litres
Fuel	1,000 gal.	3,785 litres

An exceptionally well designed vessel, the GB49 Motoryacht is the latest addition to the Grand Banks range. The main feature is the raised aft deck which provides over 150 square feet of usable deck space. The extra length results in an even more spacious salon, flying bridge and engine room as well as a large aft cabin which utilizes the full beam of the boat. The aft accommodations are offered either with two smaller cabins each with their own head and shower or an ensuite owner's stateroom with guest head or utility room.

A traditionally sturdy boat with uncompromising spaciousness, it's a boat to go places.



Left: Main Salon
Above: Aft Stateroom



SPECIFICATIONS

LOA	47'1"	14.20 m
LWL	44'9½"	13.65 m
Beam	14'9"	4.50 m
Draft	4'4½"	1.33 m
Estimated Displacement	39,000 lbs.	17,727 kg
Water	278 gal.	1,052 litres
Fuel	600 gal.	2,271 litres

The new Grand Banks 46 provides the same traditional reliability which is the hallmark of the Grand Banks. For the family with a yearning for the sea, this is the boat that has what it takes and more! A spacious salon encompassing the galley and living area, luxurious and tastefully planned accommodation in the form of three staterooms and attached head and shower. An optional layout allows for a down galley, taking the place of the port forward cabin but realising as a result, an even more spacious salon. There's even a four foot open fishing cockpit. The Grand Banks 46 is a rugged cruiser exceeding every demand for safety and dependability.

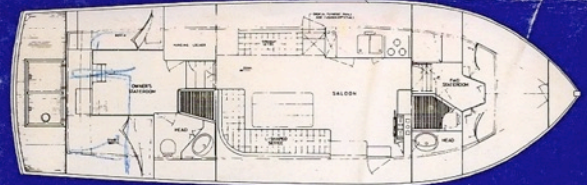


Right: Main Salon
Above: Aft Stateroom



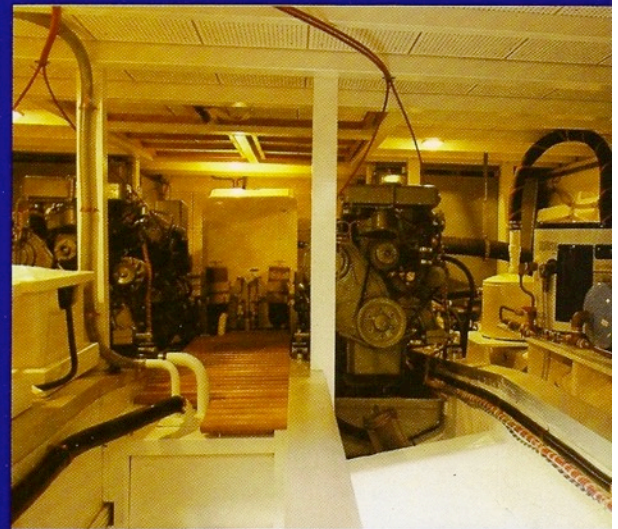


The Grand Banks 42, a truly remarkable craft with two private staterooms, a spacious salon and fully equipped galley. The multi-purpose salon combines the entertainment centre and the main living area, the hub of most activities. Both staterooms have their own head and shower. A boat with no equal, and always ready for that extended cruise, with complete comfort and luxury. The best parties, cruises and memories await you aboard your Grand Banks 42.

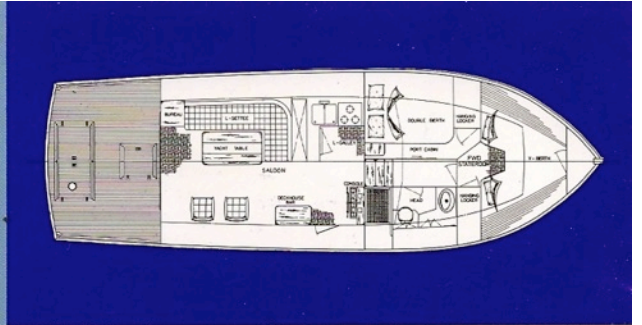


SPECIFICATIONS

LOA	42'7"	12.98 m
LWL	40'9½"	12.43 m
Beam	13'7"	4.14 m
Draft	4'2"	1.27 m
Estimated Displacement	34,000 lbs.	15,422 kg
Water	265 gal.	1,003 litres
Fuel	600 gal.	2,271 litres



Left: Main Salon
Above: Engine Room



SPECIFICATIONS

LOA	42'7"	12.98 m
LWL	40'9½"	12.43 m
Beam	13'7"	4.14 m
Draft	4'2"	1.27 m
Estimated Displacement	34,000 lbs.	15,422 kg
Water	270 gal.	1,022 litres
Fuel	600 gal.	2,271 litres

A Grand Banks 42 with a difference! The 42 Europa is a variation on the classic theme providing a versatile alternative accommodation configuration. The large deck level saloon opening onto the covered aft deck via double sliding doors generates an air of spacious luxury. Two double berth staterooms forward, richly highlighted with golden teak enhance the aura of graceful living. The massive flybridge deck with upper helm station also provides that perfect "place in the sun." Based as it is on the standard Grand Banks 42 hull, the 42 Europa inherits the same rugged seakind worthiness.

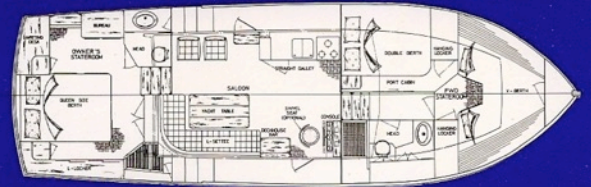


Right: Cockpit
Above: Galley



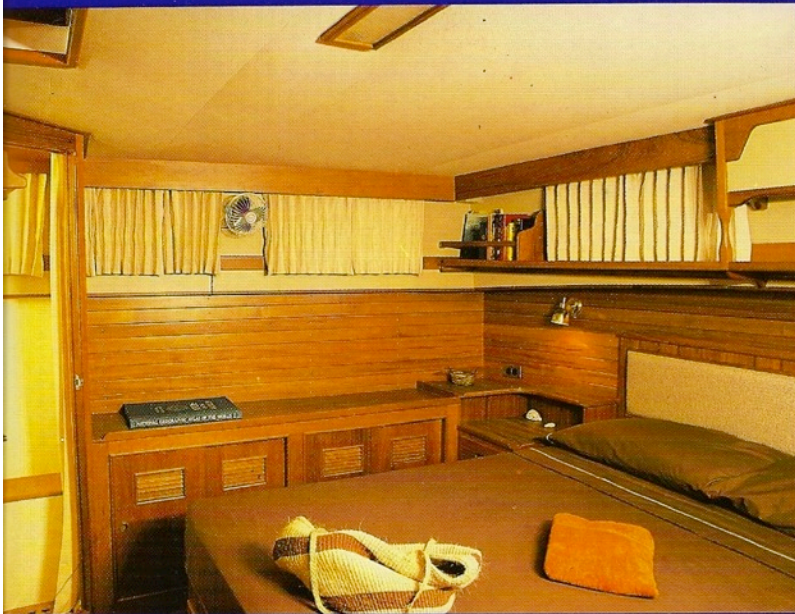


The principal features of the motoryacht are a large aft cabin, an aft deck and two staterooms forward. The aft cabin utilizes the full beam of the boat and allows queen-size sleeping accommodations. The aft deck offers space for lounging or sunning surrounded by stainless safety rails. Up forward, a stateroom to port with a double berth and a stateroom in the bow with V-berth provides sleeping accommodations for four people. There is a good-sized head to starboard with a large stall shower. Drawer space and a hanging locker are provided in each stateroom.

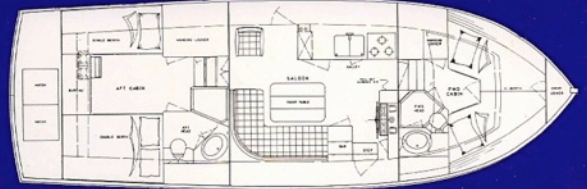


SPECIFICATIONS

LOA	42'7"	12.98 m
LWL	40'9½"	12.43 m
Beam	13'7"	4.14 m
Draft	4'2"	1.27 m
Estimated Displacement	34,000 lbs.	15,422 kg
Water	260 gal.	984 litres
Fuel	600 gal.	2,271 litres



Left: Aft Stateroom
Above: Main Salon



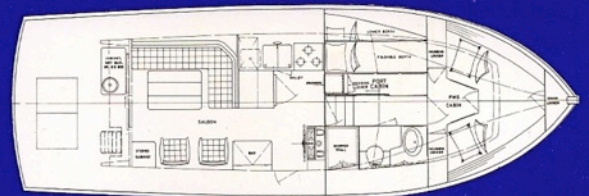
SPECIFICATIONS

LOA	36'10"	11.23 m
LWL	35'2"	10.72 m
Beam	12'8"	3.86 m
Draft	4'0"	1.22 m
Estimated Displacement	26,000 lbs.	11,797 kg
Water	140 gal.	530 litres
Fuel	400 gal.	1,514 litres

The ideal second home, the Grand Banks 36 is an ample craft for the family at sea. Rich interiors, finished with an unsurpassed blend of golden Burmese teak, parquet and distinguished joinery-work. Appreciate privacy, enjoy seclusion in the aft stateroom with attached head and shower, or in the forward stateroom, also with head. The Grand Banks 36 gives you years of satisfaction, pride and pure pleasure with such seakindly and seakeeping qualities.



Left: Main Salon
Above: Section of Aft Stateroom



SPECIFICATIONS

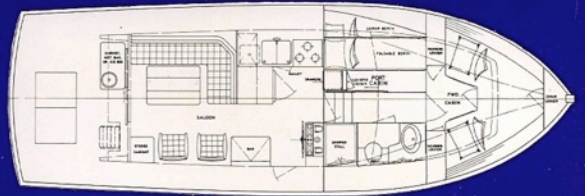
LOA	36'10"	11.23 m
LWL	35'2"	10.72 m
Beam	12'8"	3.86 m
Draft	4'0"	1.22 m
Estimated Displacement	26,000 lbs.	11,797 kg
Water	205 gal.	775 litres
Fuel	410 gal.	1,551 litres

A new generation Grand Banks, the 36 Sedan combines the rugged qualities of a displacement cruiser and exciting performance matched to her distinctive styling. The exterior is devoid of teak trim and a wash down is all you need after that extended cruise. The spacious salon opens up to a well equipped cockpit via a sliding door making it an ideal cruiser for fishing, swimming and other general out-in-the-sun activities.



Right: Main Salon
Above: Aft Cockpit





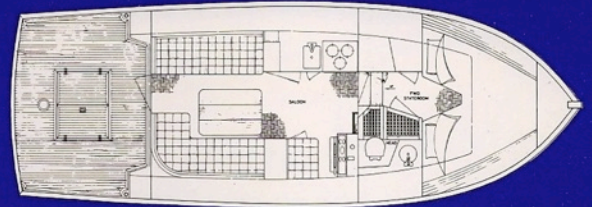
SPECIFICATIONS

LOA	36'10"	11.23 m
LWL	35'2"	10.72 m
Beam	12'8"	3.86 m
Draft	4'0"	1.22 m
Estimated Displacement	27,000 lbs.	12,272 kgs
Water	205 gal.	775 litres
Fuel	410 gal.	1,551 litres

The latest in a line of new generation Grand Banks 36's, the Europa combines traditional elegance and spacious accommodation so important for a live aboard cruiser. Two cabins forward, a large saloon with a fully equipped galley, sheltered side decks and aft deck and a massive flybridge are some of the features which help to make this boat a truly remarkable one for both entertaining and relaxation.



Left : Engine Room
Above : Main Salon



SPECIFICATIONS

LOA	31'11½"	9.73 m
LWL	30'9"	9.37 m
Beam	11'6"	3.40 m
Draft	3'8½"	1.13 m
Estimated Displacement	17,000 lbs.	7,711 kg
Water	110 gal.	416 litres
Fuel	250 gal.	946 litres

The Grand Banks 32, the world's most honest boat — A superb combination of an able sea boat and a fine yacht of outstanding quality and craftsmanship. The GB32 incorporates spaciousness and meticulously planned accommodations with well thought-out safety features for added cruising confidence. There's no compromise to the design and construction. Like a trusted friend, whether motoring around the bay or miles out at sea, the Grand Banks 32, is truly dependable and will always come through for you.

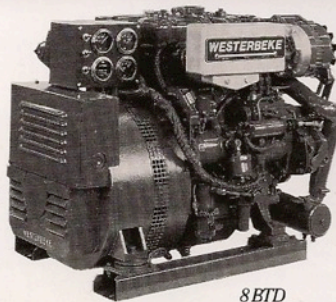


Left: Main Salon
Above: Helm Station

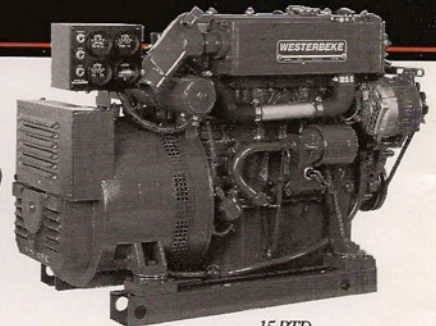
WESTERBEKE

Marine Diesel Generators

You can have the very best marine generator made anywhere in the world today—a Westerbeke. Quiet, lightweight and compact, our diesel generators are engineered to provide smooth reliable performance. Westerbeke products are supported by a worldwide network of master distributors and dealers, so technical support, parts and service are always available. Cruise in quiet comfort knowing all your on-board electrical needs are being properly taken care of. Ask for a Westerbeke generator when placing the order for your new Grand Banks.



8 BTD
Diesel Generator



15 BTD
Diesel Generator

WESTERBEKE
Marine Engine Products

AVON INDUSTRIAL PARK, AVON, MA 02322 • TEL: (508) 588-7700

Supplied to Grand Banks by

HANSEN MARINE ENGINEERING, INC., TIOGA WAY, MARBLEHEAD, MA 01945 • TEL (617) 631-3282

WESTERBEKE

Marine Generators

DIESEL GENERATORS										
SPECIFICATIONS										
KW RATINGS AT 60 Hz	5.0	8.0	10.0	11.0	12.5	15.0	20.0	25.0	32.0	45.0
KW RATINGS AT 50 Hz	4.0	6.0	7.5	8.25	9.3	12.5	16.0	20.0	25.0	36.0
NO. OF CYLINDERS	3	3	3	4	4	4	4	4	6	6
CU. IN. DISP.	42.47	60	68.22	80	91	128	154	182	247	346
R.P.M. 60 Hz	1800	1800	1800	1800	1800	1800	1800	1800	1800	1800
R.P.M. 50 Hz	1500	1500	1500	1500	1500	1500	1500	1500	1500	1500
LENGTH	28.25"	28.2"	32.06"	34.56"	37.25"	38.0"	50.69"	51.12"	62.5"	67.38"
WIDTH	16.0"	17"	17"	18"	18.17"	18.13"	22.59"	23.12"	22.21"	24.5"
HEIGHT	20.53"	21.8"	22.0"	23.75"	25.34"	25.06"	27.91"	28.59"	31.0"	36.63"
WEIGHT	330 LB	450 LB	495 LB	582 LB	638 LB	683 LB	910 LB	933 LB	1300 LB	1965 LB