

41 HERITAGE EU

the HERITAGE SERIES by Grand Banks



GRA

41 Heritage EU

At first look, the 41 Heritage EU is everything you expect in a Grand Banks. Refined nautical style, intelligent design, meticulous attention to detail. A master stateroom with queen berth and a generous guest cabin provide ample room for two couples. Contemporary furnishings and décor blend with GB's classic teak joinery, enhancing the sense of luxury. Wide side decks, an expansive flybridge and a host of other features inside and out promise to make the 41EU another cruising classic from Grand Banks.

A closer look, though, shows you the 41EU is unlike any Grand Banks we've ever built. Powered by the Zeus propulsion system, the 41EU delivers unparalleled control, speed and efficiency. Dock with pinpoint accuracy; hold a rock-steady position in wind and current; travel faster and farther while using less fuel. Today's most advanced marine propulsion system, joined with a new modified deep-V hull design and impeccably executed fiberglass construction, combine together to deliver a revolutionary new level of performance at both planing and semi-displacement speeds.

Tradition above, revolution below – and Grand Banks throughout.



About the **Heritage Series**

Grand Banks launched an icon when the Heritage Series was introduced nearly 50 years ago. It remains widely regarded as one of the most successful cruising yacht designs ever built – one that Grand Banks continues to refine and enhance for a new generation of owners. Today's Heritage models, both the classic aft-cabin "CL" and the extended-salon "EU" versions, distinguish themselves as much for their speed and performance as their timeless lines and legendary reliability.

Step aboard, open the throttles, and you'll sense how the Heritage Series remains at once an icon and an innovation – spirited and sophisticated, inspiring and exhilarating.





A GOURMET'S GALLEY

The galley seems large for a boat of this size, with an under-counter microwave leaving the Corian-topped counters open for plenty of work space. Smartly-designed storage will hold an amazing amount of food and cookware.

GUEST CABIN ↴

Two generously-sized single berths, each with drawer storage and reading lights, can easily convert to a single queen berth. Two portlights and an overhead hatch provide abundant light and ventilation.

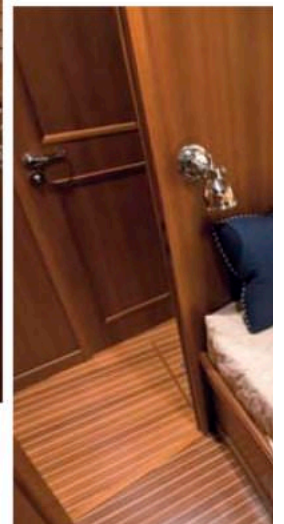
MASTER STATEROOM

The forward master features a queen island berth atop large drawers for ample storage, while a cedar-lined hanging locker and shelf lockers offer even more. En-suite access to the head is complemented by a second companionway door for guest entry.



Living Quarter

With a wide 15'-8" beam, the living quarter offers amazing visibility throughout the motor yacht. The space feels more open and airy than other boats of this size. The interior features rare fabrics and finishes with teak for a sea-ready look. The smart, well-equipped seating sits forward of a spacious seating area around a table. This living space opens to a cockpit that stays dry with elements by the edge of the deck. Below deck, the cabins comfortably accommodate two cruising couples.



Better Performance By Design

Owners describe the sensation at the helm of a Grand Banks as stable, steady and supremely responsive. Our reputation for a superior cruising experience is one built from the bottom up—literally, starting with an expertly designed and constructed hull.

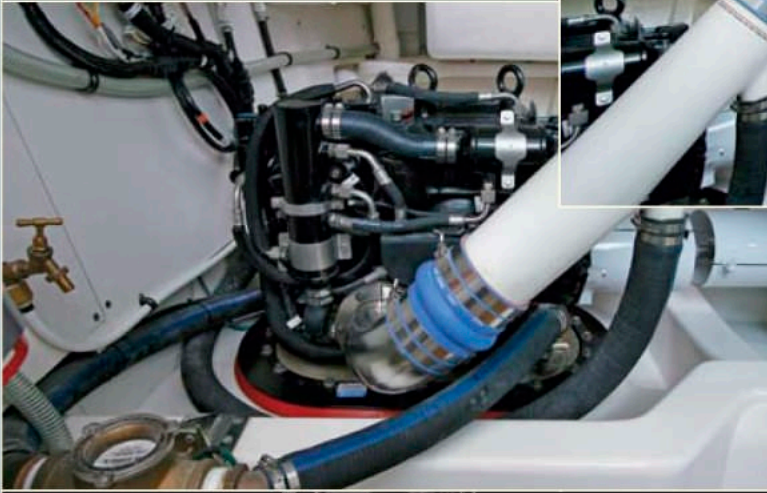
The 41EU's modified deep-V design is no exception. Many subtle features contribute to the low trim angle, great visibility and comfortable ride: the dual-chine hull gets you swiftly up on plane, while the flared bow helps keep things dry on deck. More rake in the bow angle and a shallower forefoot make for a softer, more comfortable entry of the hull into rough waters. Placement and size of the keel keeps her solidly on track.

Just as important as the design of her hull is its construction – a time-tested process that is renowned for producing seaworthy, long-lasting boats. The highest quality fiberglass fabrics are expertly hand laid and laminated with resins selected for their ability to resist blistering. Both the hull bottom and topsides are cored, using cross-linked closed-cell foam to prevent water intrusion.

This is complemented by our use of clear gel coat below the waterline, which allows for a thorough and rigorous visual inspection of the laminate during the QC process. Additionally, the hull bottom of each 41EU receives three layers of epoxy barrier coat, which dramatically reduces the chance of osmosis. A close look at any Grand Banks hull will reveal a beautiful, mirror-like gel coat finish that is built to look new for many years to come. >>



ANATOMY OF ZEUS IN THE 41 HERITAGE EU



- Each pod is mounted through a single hole in the hull, with no additional penetrations for the shaft, struts, or rudder aperture. The engine intake is also in the pod, and it even includes an extra intake for a generator. Result: the opportunities for water intrusion are vastly reduced, and any leak that does occur can be more easily traced to its source.
- Each pod is mounted in a tunnel which provides additional protection for the pod and propellers. Debris in the water is typically deflected downward by the keel; any collision with the pod itself would likely be at the skeg, which protects the props. Should the debris be substantial, the skeg is designed to shear away to minimize damage to the drive and the boat.
- Because Zeus drives utilize counter-rotating propellers and are mounted on large rubber grommets, gear noise and vibration are significantly reduced for a more quiet and comfortable ride. Engine exhaust odors are nearly eliminated by venting the emission through the propeller hubs, where the water flow takes it far back into the wake.

Features of the 41 Heritage EU

• UTILITY & STORAGE ROOM **1**

One of the most practical luxuries on board is the large utility room, easily accessed through a large gas-assist hatch in the salon floor. A teak-stepped stairway folds away to create a wide-open area for added storage, tool room, fishing gear, pantry, laundry or any other purpose that suits your cruising needs. The standard tool bench can be augmented with an optional freezer and washer/dryer for extended cruising and improved livability.

• COMMAND HELM **2**

Great visibility forward and aft thanks to a raised helm platform with storage locker underneath. Wide and comfortable custom helm seat, with easy access to side door.

• EN-SUITE HEAD **3**

Generous head offers en-suite access from the master plus a separate door for guest access. A fully enclosed glass-walled shower gives at-home comfort.

• NEW ENGINE ROOM **4**

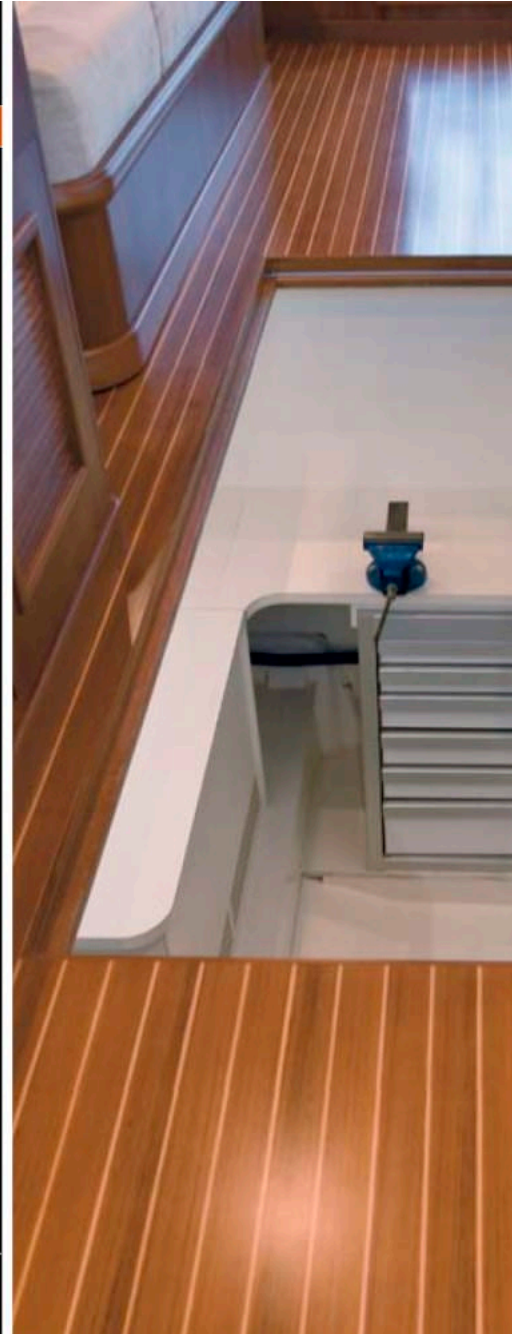
The compact arrangement of Zeus drives and engines gives easy access to service points and outboard systems. Easy stairway access is available through a cockpit hatch.

• SPACIOUS FLYBRIDGE **5**

A large L-settee surrounds the custom teak table, with a second settee to port. Centerline helm has space for optional helm seats on either side. Abundant storage is available beneath the settee.

• FLYBRIDGE CONSOLE **6**

The flybridge helm features an attractive high-gloss finished teak sun hood, plus a custom Perspex windshield to protect your eyes and instruments from glare.



41EU MAIN DECK

STANDARD LAYOUT

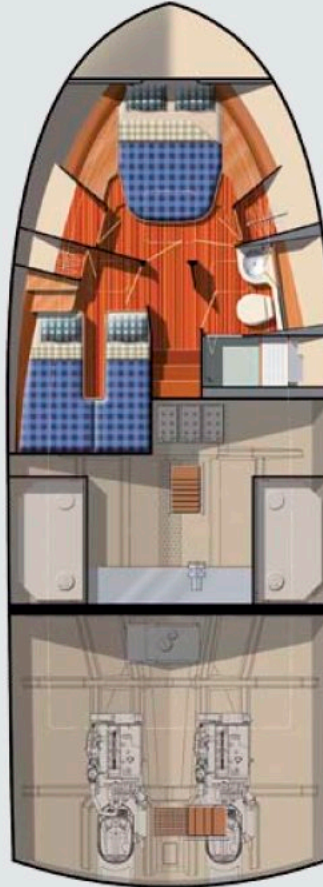
- L-DINETTE AND GALLEY UP
- STARBOARD DOOR NEXT TO HELM STATION



41EU LOWER DECK

STANDARD LAYOUT

- ENGINES IN TRADITIONAL LAZARETTE SPACE WHICH PROVIDES AMPLE STORAGE UNDER SOLE



MORE UNIQUE F

Performance and t highlights of the ne accommodations a cially for a boat of require a consider traditional shaft dr room is space gain

[Main Deck]

- Foredeck area feat
- Wide, 19-inch side when moving abo
- Built-in flybridge str integrated, vented
- Built-in hot & cold v
- Large teak swim pl makes vessel acce:

[Lower Deck]

- Cedar-lined hangin guest cabins.
- Six inches of specir room noise from th
- Large utility room c cruising lifestyle.
- Starboard fender l access around eng
- Engine room is fini: better appearance

IMPORTANT NOTE

Grand Banks Yachts rese make changes to deckpl renderings, performance policies without prior noi



GRAND BANKS

www.grandbanks.com

IMPORTANT NOTICE

Grand Banks Yachts constantly seeks to improve the specification, design and production of its boats, and alterations may take place continually. While every effort is made to provide timely and accurate information, this information should not be regarded as an infallible guide to current specifications, nor does it constitute an offer for the sale of any particular model. Photos, illustrations, renderings, deckplans, other artwork and their accompanying text are for informational purposes only and do not represent actual boats or equipment. Grand Banks Yachts, Ltd., reserves the right to make changes to any information herein without notice or penalty.